

GNANODAYA PUBLIC SCHOOL

(Affiliated to ICSE, New Delhi)

A launchpad for your child's imagination

Our comprehensive curriculum with emphasis on the overall development of the child will ensure a bright future ahead for our kids!

ABOUT OUR SCHOOL

Gnanodaya is a co-ed ICSE Boarding & Day-Boarding School, founded in the year 2008, for children from Pre-Kindergarten through grade 10. Situated on the outskirts of the safe & scenic city of Mysore, wellknown to have produced child prodigies, GPS is firmly rooted in the cornerstones of Courtesy, Perseverance, Discipline, and Inclusivity. The school is a dynamic blend of cultures, knowledge, talents and minds.



2008
FOUNDED IN



1000+
ALUMNI



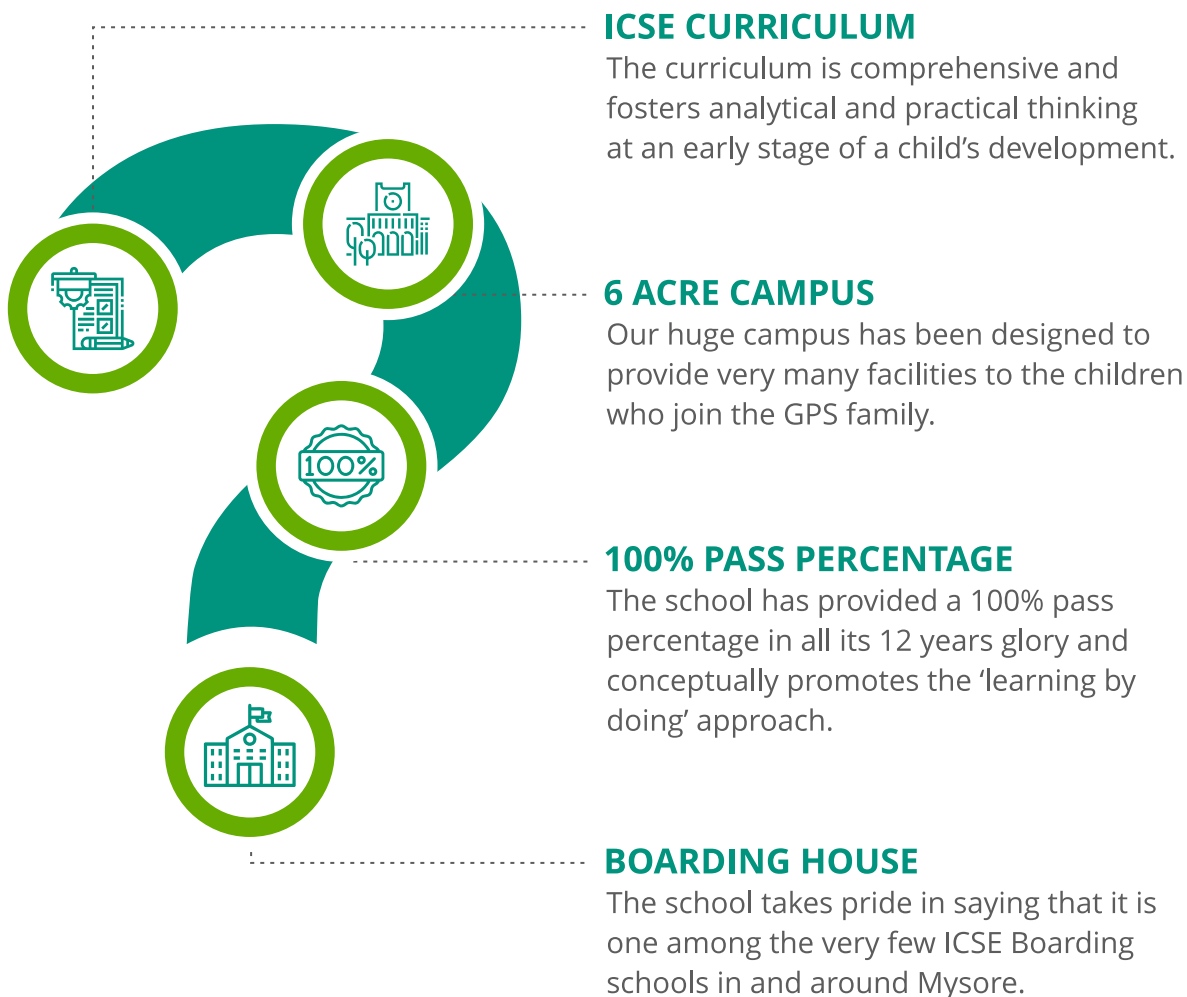
300+
STUDENTS



100%
PASS PERCENTAGE

WHY GPS

There are several reasons why you should choose Gnanodaya Public School, but here are just few!





MISSION

To **PROVIDE** holistic education that encompasses academics, co-curricular and extra-curricular activities.

To **PROMOTE** student wellbeing by teaching for life beyond classroom through behavioral nourishment - courtesy, perseverance, inclusivity, and discipline.

To **PRACTICE** ethical, safe and child-friendly approaches in every facet of a child's Student Life - in our Day-Boarding as well as Residential Program.



CURRICULUM & ACADEMICS

PRE-SCHOOL


Our youngest learners discover meaning through exploration and integrated lessons. In classrooms that are filled with play-based learning activities, it is through a child's natural curiosity, autonomy, and free choice that the desire to learn is ignited. Once piqued, children will explore, question, collaborate, predict, experiment, tinker, analyse, and have a lot of fun as they learn.

PRIMARY SCHOOL

Young kids learn best when they know they are valued. Our mission is to identify the uniqueness in each child and bring out their best as they step into the world of formal schooling. They are encouraged to try, to learn, to fly, and to fall, but most of all stand back up right after, to surge ahead. It is a perfect time to grow through trial & error.

SECONDARY SCHOOL

At this stage, academics becomes the primary focus and the rest revolves around it. As students inch closer to their board exams, they are coached rigorously to achieve their best. ICSE curriculum provides for an in-depth learning of every subject, alongside projects that require intense research & analysis, broadening their horizons.

 We strongly believe that the social and physical growth of a child is an integral part of school-life and beyond.



LIST OF ACTIVITIES

- ❖ Swimming (In house pool)
- ❖ Rifle Training
- ❖ Katha Kala Kshepa
- ❖ Karate
- ❖ Yoga
- ❖ Music
- ❖ Trekking

CO-CURRICULAR & EXTRA-CURRICULAR ENRICHMENT

We strongly believe that social & physical growth of a child is an integral part of school-life and beyond. Our dynamic programs adapt with the interest of our students. The talents, hobbies discovered, and strengths identified today will take the form of confidence tomorrow as they step out of school into university, and adulthood.



"I was particularly worried about sending my daughter to a residential program away from home - I was concerned about the food, the discipline and about just how she'd fit in.

A year later, when she came home, I was pleasantly surprised at how she had transformed - the way she spoke, the way she cleaned after herself everywhere... she was just gleaming with joy and confidence.

She is becoming who she wants to be, and went beyond fitting in to figuring out, learning and thriving."

- Parent





ABOUT DAY-BOARDING

The Day-Boarders and Day-Scholars include lot of locals from the city of Mysore. Students are nurtured to grow mentally and physically and gain wisdom as they prepare to enter into the real world out of school. The School motto 'To Nurture children in Mind and Character' is taken very seriously to help the holistic development of the student during their stay at GPS.



SCHOOL TIMINGS

The school goes on till 4pm and includes breakfast, lunch and snacks for all Day-Boarder. Prep hour post school focuses on coaching students who need special attention in academics; individual attention to students in every subject that they opt for.



TRANSPORT FACILITIES

The school provides transport facilities on request to all children in and around Mysore. Buses fly to every house as per the route scheduled to accommodate children in the respective areas.



MEAL PLANS

A keenly created, well-balanced and nourished diet is put together for Day-Boarders and Boarders while the Day-Scholars are allowed to bring in their own meals. The thought behind providing food-on-campus was to support and help working parents worry less as we step in charge. Meal plans include a good supplement of vegetarian foods and a healthy non-vegetarian nutriment to meet all flavor palettes and choices.



GPS RESIDENCE LIFE PROGRAM

Gnanodaya' Residence Program is centered around the development of young & adolescent children, focusing on prepping them for a life beyond the gates of the school.

The goal is to develop skills of Independence, Discipline, Self-Reliance, Resilience, Responsibility, Mannerism, Etiquettes, and more.

COHESIVE COMMUNITY

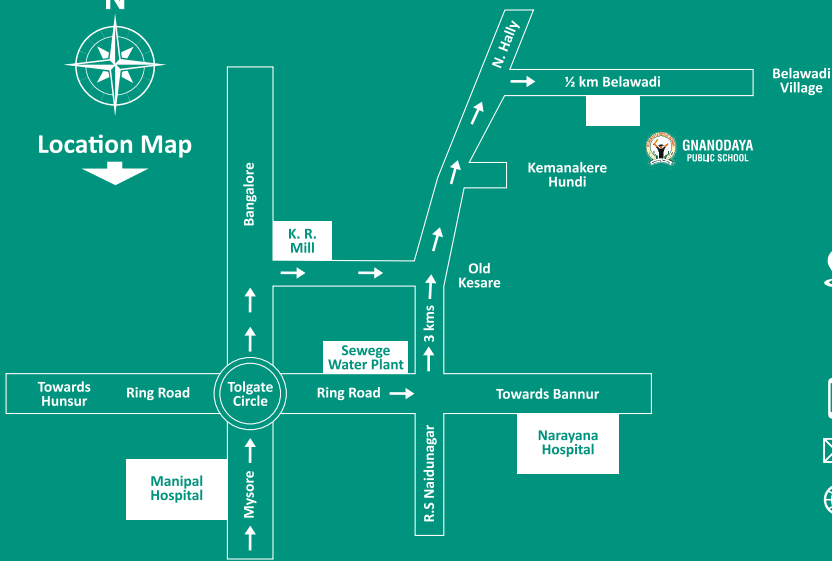
This is fundamental to making our Boarding Program a pleasant and fruitful experience for the student as well the parents. Self-discipline, consideration, courtesy towards others, high standards for behaviour, and community involvement are all key components of our Program.

NURTURING COMPANIONSHIP


Boarders bring warmth, openness, and generosity, striking a genuine connection with everyone they meet. They find strength in trials and triumphs, and grow both as individuals and as a part of the collective.

EMPOWERING CHALLENGES

Balancing academics and extracurricular activities, while learning to live independently can be challenging and also rewarding. The Boarders are taught and pushed harder every day to be and act responsibly.



CONTACT US

 Survey No. 413/4, Belawadi, Naguvanahalli Post
Near Manipal Hospital, Srirangapatna Taluk,
Karnataka 571438

 9538536969 / 9538894522 / 9538894524

 gnanodayapublicschool@yahoo.co.in

 www.gpsmysore.org



"I wanted my son to pursue his passion for music, while also focus on the academics. I was eagerly searching for a school which gave equal importance to both knowledge and skills. When I looked at the pedagogy at GPS, I was happy to see that the school strives to achieve a delicate balance between academic rigor and encouragement to pursue passion. And that's why we chose GPS."

- Parent



CONNECT WITH US

